



IFHE 2014
Buenos Aires



International Federation of Hospital Engineering
(IFHE)

23rd IFHE Congress 2014



IFHE
International Federation
of Hospital Engineering



AADAIH
Asociación Argentina de Arquitectura
e Ingeniería Hospitalaria

**Dear Colleagues,**

We are pleased to invite you to the city of Buenos Aires on the occasion of the XXIII World Congress of Hospital Engineering to be held in 2014.

The Argentine Association of Hospital Engineering and Architecture (AADAIH) is the first national association in Latin America. Since its foundation in 1986, it has grown to currently become a leader bringing together the countries within the region and consequently promoting the creation of even societies in Brazil and Uruguay – SUAIH in 1993 and ABDEH in 1994. Both societies also support the idea of organizing IFHE Congress in South America for the first time.

AADAIH has organized twenty Latin American congresses and in this opportunity it has become partner of MCI Buenos Aires, whose expertise and professionalism has been regarded as essential in order to continue to work and make the project come true. Delegates from 17 Latin American countries and 10 other countries from other continents have participated in the above mentioned Latin American conferences.

We believe that celebrating an International Congress in Buenos Aires will consolidate the relationship between countries, contributing to the development of Latin American National Associations around IFHE.

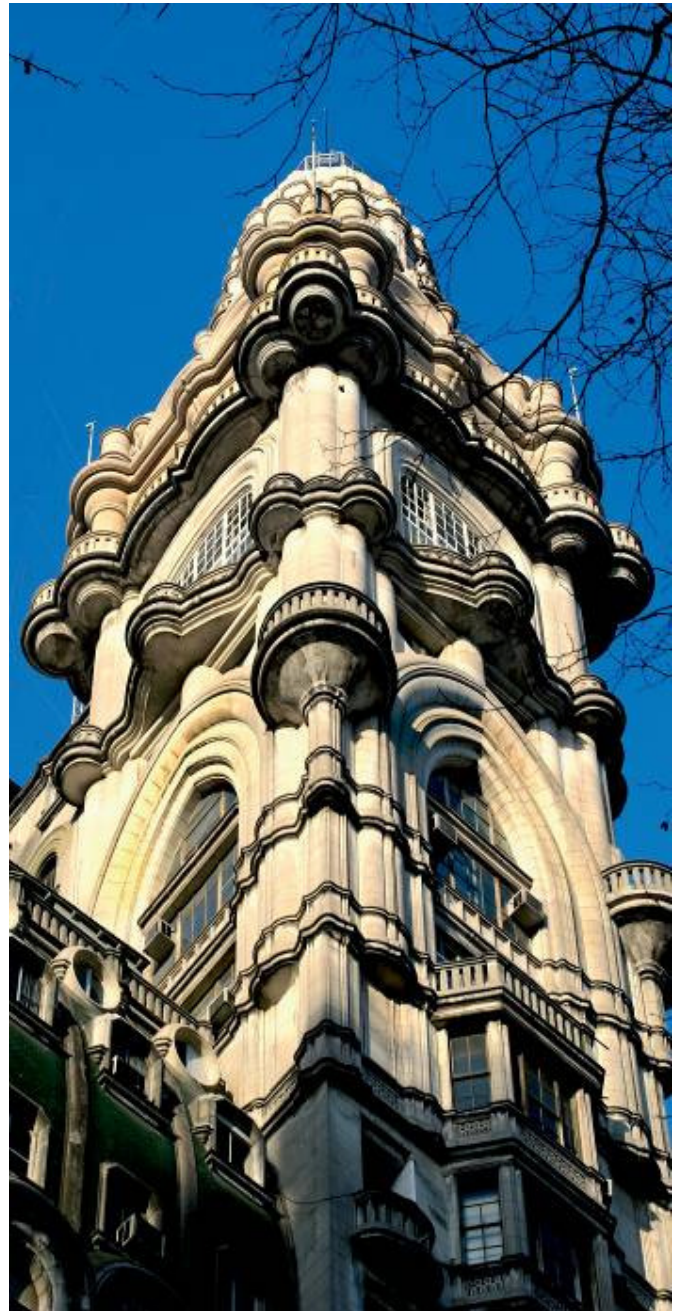
Argentina has been called the land of the six continents for its breath-taking spectacles and landscapes, a clear sky and a convenient currency, making the country a suitable and attractive destination.

The city is also venue for many international exhibitions, conventions, conferences, fairs and events from different market segments and topics of highest scientific level. For the above mentioned, delegates as well as the accompanying people will be able to make interesting technical visits, stopover in the commercial exhibition full of technological advances and enjoy an attractive social and touristic program that will make 23rd IFHE Congress an unforgettable experience.

Yours faithfully,

Arch. Alicia Preide
Secretary
AADAIH

Eng. Ricardo Franceschelli
President
AADAIH

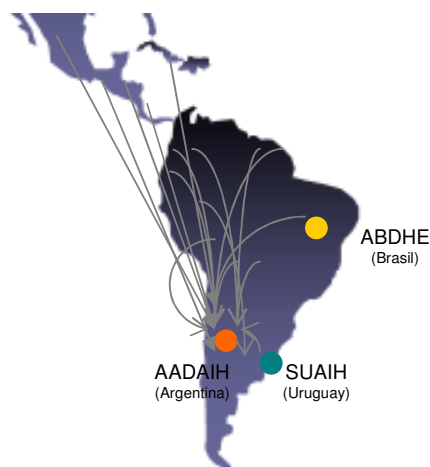




Why Buenos Aires?



- ✓ It would be the first time that an IFHE Congress is held in Latin America.
- ✓ Argentina and Buenos Aires City have an adequate structure for international events organization.
- ✓ Argentina is an attractive tourist destination that receives around 5 million people per year.
- ✓ Because of a strategic policy, the national currency allows a lower cost Congress in comparison with other countries.
- ✓ Since 1990, year after year, AADAIH has turned Buenos Aires into a merging point for the Latin American professionals





Date

- October - November, 2014.

Theme

"Healthcare Facilities in times of Radical Changes"

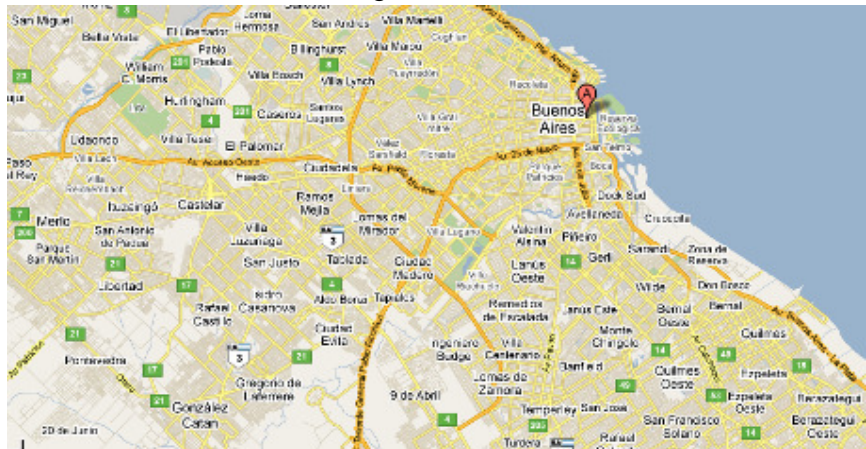
The proposed theme aims to make an evaluation of the current hospitals as response to its cultural background and the analysis of its future behaviour based on the forthcoming global changes such as: environmental, age group, life expectancy increase, changes in the population structure and limited economic resources. It is also proposed to converge

engineering, architecture and management in order to optimize human, natural and financial resources. This subject matter aims to continue the exchange of ideas raised in Barcelona in 2008 ("Sustainability") and in Tokyo in 2010 ("Healthcare Engineering against Cultural Background"), enlightened in 2012 with the technical visits to hospitals in Norway.

Healthcare System Overview

The Metropolitan area of Buenos Aires is an urban conglomerate that extends to approximately 50 km from downtown Buenos Aires with more than 14 million people living there. It has a complex health system which consists of about 1,500 institutions, 3,500,000 sqm of covered area and almost 50,000 beds, with a ratio of 3.6 beds per 1,000 inhabitants. From these 50,000 beds, almost 40% (18,000) belong to the public sector while the remaining to the private sector. The public sector has more than 800

buildings including hospitals and health centres, and private sector has about 700 buildings including hospitals, clinics and nursing homes.



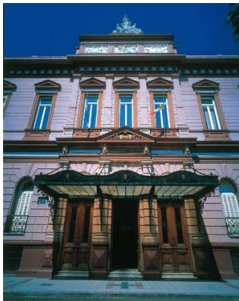


Technical Visits



HOSPITAL DE NIÑOS
DR. PEDRO DE ELIZALDE

HOSPITAL EL CRUCE



HOSPITAL ITALIANO

HOSPITAL ALEMÁN



HOSPITAL AUSTRAL

INSTITUTO FLENI



FUNDACION FAVALORO

SANATORIO DE LOS ARCOS





Organization of the Congress and Support

Organizers

- **Asociación Argentina de Arquitectura e Ingeniería Hospitalaria (AADAIH)**
IFHE "A" Member N° 025, since 1987. AADAIH counts with 60 members and other 40 interesting people.
- **MCI Buenos Aires Office**
MCI is an independent, global association, communications and event Management Company. Its combined expertise enables them to offer strategy, creativity and execution in the field of association management (AM&C), Congress and Exhibition (PCO), live communication, meetings, events and incentives and performance improvement programs.



www.mci-group.com

Official Supporters

- Government of Buenos Aires City
- National Institute for Tourism Promotion (INPROTUR)
- Ministry of Health

Expected Attendance

- Estimated Delegates: 500
- Estimated Speakers: 40

Estimated Registration Fee

- USD 700

Financial Aspects

- AADAIH will bear full financial responsibility for the Congress as well as the fulfilment of IFHE Standing Orders.



Convention and Exhibition Facilities

UCA University



The Convention Centre is located in the youngest and most modern neighbourhood of the City of Buenos Aires: Puerto Madero. It counts with two auditoriums, a micro theatre, meeting rooms and a wide lounge of multiple

uses with capacity for exhibition and coffee breaks.

The meeting rooms can be all together as well as in separated areas, being an ideal location for the organization of conferences, exhibitions and all kind of academic or corporate events.



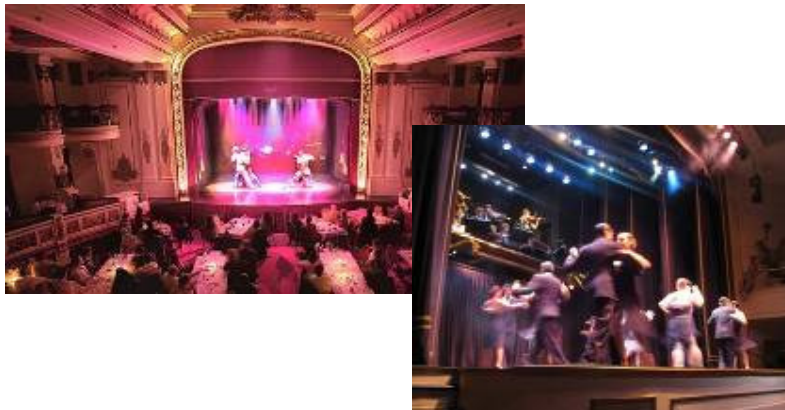


Social Events

Opening Ceremony



Dinner Tango Show



Council Meeting



The Council meeting will be also held at UCA University, nearby the gastronomic area of Puerto Madero.

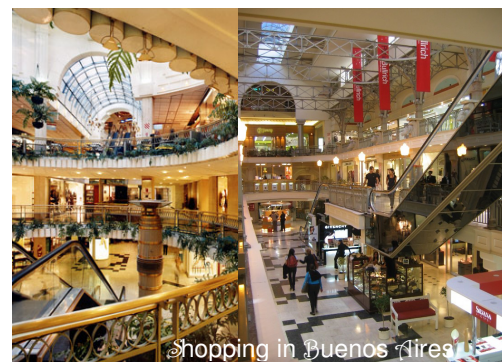


Tourism in Buenos Aires

Buenos Aires offers the widest tourist alternatives of singular beauty and accessibility. It is undoubtedly the Latin American city that best resembles the cosmopolitan and aristocratic

atmosphere of the big European capitals. Full Day tours and half day tours are available for visiting museums, neighborhoods and estancias, amongst others.

Full and Half Day City Tours





*P*re and *P*ost-*C*ongress *T*ours

A place to enjoy all four seasons and every type of scenery imaginable. Each and every region in this country can offer something different, as Argentina contains most of the physical conditions known to man: heat, cold, forest, desert, mountains, endless plains and big cities. Yet, the most remarkable feature in this wide variety of areas is its unspoiled nature, making the country a very attractive tourist destination.

Iguazú Falls



Salta & Jujuy



Mendoza

Bariloche



Ushuaia & Calafate





International Transportation

Buenos Aires International Airport "Ezeiza," is the main international airport of Argentina, and is frequently an entry

point to the country, then offering connecting flights to various regions.

The following major international airlines have direct flights to Buenos Aires:



Hotel Accommodation



Buenos Aires, offers visitors excellent hotel accommodation with more than 60,000 rooms divided into 3, 4 and 5 stars hotels, a quantity which will be steadily increased year to year.

A wide variety of hotels can be found throughout the country, offering visitors a range of prices and styles.

Almost all hotels are within walking distance from the venue.



CV – Liliana Font, Arch.

Founder partner of Estudio ALVARADO – FONT – SARTORIO, Archs., architectural office specialized in Hospital Planning and Design for the last 30 years, with its headquarters in Buenos Aires city.



In charge of many project including master planning, design and construction supervision of new facilities, expansions or upgrading of existing buildings, and technical consulting services for private or state administered health-care institutions in Argentina and several Latin American countries.

Founder member and Past President of AADAIH (Asociación Argentina de Arquitectura e Ingeniería Hospitalaria).

AADAIH President, 4th Latin American Congress, Buenos Aires 1993

AADAIH President, 9th Latin American Congress, Buenos Aires 1998

AADAIH President, 17th Latin American Congress, Buenos Aires 2006

IFHE Executive Committee Member from year 1992 to 1998 and from year 2000 to 2002.

IFHE Council Member from 1988 to 2008

IFHE DIGEST Advisory Panel for year 2009 and 2010

IFHE Monitoring Committee of the Administrative Secretariat for the period 2003 – 2004 and 2004 – 2005.

Invited Professor on "Health Care Facilities" in the postgraduate courses of Clinic Engineering Faculty, Favaloro University.

Looking forward to seeing you in

Argentina in 2014!!!

